



**rts** Resolve Tech  
Solutions

# The Three Ways You Can Migrate to SAP S/4 HANA

INTRODUCTION

# The SAP S/4HANA Revolution

Organizations need to move to SAP S/4HANA for several strategic and operational reasons, particularly as the business and technology landscapes continue to evolve. One of the primary drivers is the end of support for SAP ECC, SAP's legacy ERP system, by 2027 (with extended support until 2030 under certain conditions). After this period, no further updates, security patches, or technical support will be available, making the transition to S/4HANA essential for maintaining compliance, security, and access to SAP's latest innovations.

A key advantage of SAP S/4HANA is its ability to provide real-time insights and data processing through the SAP HANA in-memory database. Unlike traditional systems, it processes transactions and analytics simultaneously, delivering faster data access and enabling real-time decision-making, which is crucial for staying agile and competitive in today's fast-paced business environment. Additionally, the integration of SAP Fiori, a modern, user-friendly interface, enhances the user experience, improving productivity and reducing the learning curve compared to older systems.



*"Successful SAP S/4HANA migration is not just about moving to a new system—it's about transforming how your business operates, leveraging real-time insights, and unlocking the full potential of automation and innovation to drive long-term growth."*

*Bimal Soni*

S/4HANA also offers the benefit of a simplified IT landscape, reducing the data footprint and eliminating redundancies. This streamlining leads to fewer hardware requirements, lower maintenance costs, and a reduced Total Cost of Ownership (TCO) over time. Moreover, SAP S/4HANA provides greater agility and scalability, enabling businesses to expand or adapt to changing market conditions without the need for major system overhauls.

Another key factor is S/4HANA's seamless integration with cloud, AI, machine learning, IoT, and advanced analytics technologies. These integrations allow businesses to automate processes, predict trends, and unlock new opportunities, ensuring they remain competitive in an era of rapid technological advancements. Furthermore, S/4HANA enhances compliance and reporting capabilities by simplifying financial and operational reporting, making it easier for organizations to stay compliant with local regulations and industry standards.

SAP S/4HANA also offers industry-specific solutions tailored to sectors such as manufacturing, retail, healthcare, and utilities, enabling businesses to leverage functionalities designed to meet the unique needs of their industries. With improved data management and integration, S/4HANA helps businesses eliminate data redundancy, connect seamlessly with partners, and manage operations more efficiently across the supply chain.

Finally, S/4HANA serves as a cornerstone for digital transformation, empowering businesses to modernize and innovate. Its powerful capabilities in automation, advanced analytics, and cloud integration enable companies to stay competitive and digitally agile. While the migration to S/4HANA may seem complex, the long-term benefits—ranging from increased efficiency and real-time insights to future-proofing business operations—make it a critical investment for organizations aiming to thrive in the digital age.

Overall, SAP S/4HANA is transforming how organizations operate, enabling them to harness real-time insights, streamline operations, and drive business growth. However, for many organizations, migrating to S/4HANA can be complex, given the multiple paths available. In this eBook, we'll break down the three key migration methods that can help your business transition effectively, while aligning with your specific needs and operational environment.

# Migration Path #1

## On-Premises to On-Premises S/4HANA Migration

For businesses that prefer maintaining control over their IT infrastructure, migrating from an existing on-premises SAP system to an on-premises version of SAP S/4HANA is a natural fit. This path, often referred to as a "Brownfield" approach, involves upgrading and converting the existing SAP environment to leverage the new capabilities of S/4HANA.

### Key Benefits:

- **Complete Control Over Infrastructure:** You maintain direct control over your hardware, data, and applications, allowing for custom configurations that meet your unique business needs.
- **Data Residency and Compliance:** On-premises solutions are ideal for industries with stringent data residency and compliance regulations, ensuring full adherence to local laws.
- **Leverage Existing Investments:** Reuse your current IT infrastructure, reducing the immediate costs involved in the migration.

### Considerations:

- **IT Resource Intensive:** This approach requires substantial internal IT resources to manage the hardware, software, and ongoing maintenance.
- **Higher Upfront Costs:** Hardware investments and licensing fees are typically higher, though operational costs may be predictable.



# Migration Path #2

## On-Premises to Cloud, Then to S/4HANA

For organizations looking for scalability and flexibility, migrating from an on-premises SAP system to the cloud—and then transitioning to SAP S/4HANA—is an attractive option. This two-step process begins with migrating legacy SAP systems to a cloud environment and eventually upgrading to SAP S/4HANA in the cloud.

### Step One: Moving to the Cloud

The first step involves moving your legacy SAP environment to a cloud infrastructure, which may be a public cloud, private cloud, or a combination (hybrid cloud). Here you can ensure a seamless migration by addressing cloud complexities first.

### Private Cloud vs. Public Cloud

#### Private Cloud

- Offers greater control, customization, and data security.
- Best suited for enterprises with strict regulatory requirements or those needing a tailored cloud environment.
- Dedicated resources ensure consistent performance, and security concerns are minimized.

#### Public Cloud

- More cost-effective, with scalability that allows businesses to expand or shrink resources based on demand.
- Suitable for organizations that need agility, pay-as-you-go pricing, and are willing to operate within the parameters of shared cloud resources.
- Providers manage infrastructure, reducing the burden on internal IT teams.

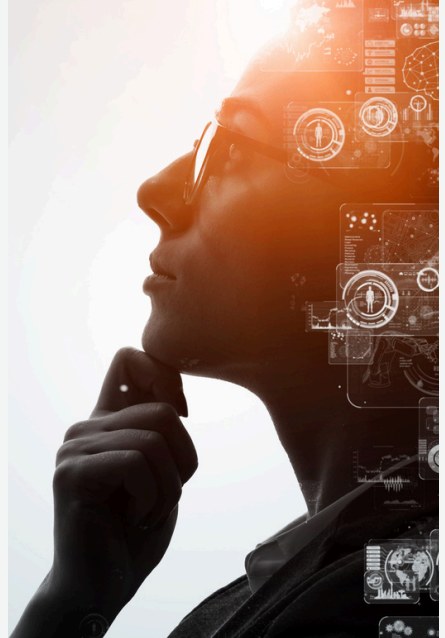


## Step 2: Migrating to SAP S/4HANA in the Cloud

Once the legacy system is in the cloud, and cloud complexities are tested, migrating to SAP S/4HANA becomes simpler, benefiting from the inherent advantages of the cloud infrastructure.

### Key Benefits:

- **Scalability and Flexibility:** The cloud allows you to quickly adapt to changing business needs, scale resources up or down, and only pay for what you use.
- **Lower Total Cost of Ownership (TCO):** Transitioning to the cloud reduces the need for large capital expenditures on hardware, making it easier to manage costs.
- **Improved Disaster Recovery and Business Continuity:** Cloud environments provide better backup and disaster recovery options, enhancing the resilience of your business processes.



# Migration Path #3

## On-Premises Direct to S/4 HANA

For organizations ready to make a significant leap, migrating directly from an on-premises SAP environment to SAP S/4HANA is a viable option. This path is often referred to as a “Greenfield” approach, as it involves a fresh implementation of S/4HANA, allowing organizations to reimagine their business processes.

### Key Benefits:

- **Clean Slate for Process Optimization:** By starting from scratch, you can redesign your processes, adopt best practices, and take full advantage of SAP S/4HANA's capabilities.
- **Reduced Complexity:** Migrating directly to S/4HANA eliminates the need for legacy customizations and complexity, helping to modernize your IT landscape.
- **Future-Proofing Your Organization:** A direct migration means adopting the latest technologies and features from SAP S/4HANA, ensuring your organization stays ahead in an evolving market.

### Considerations:

- **Higher Initial Effort:** The process requires thorough planning and design. Implementing new business processes can be time-consuming but highly beneficial in the long run.
- **Change Management Needs:** Since this path involves significant changes to processes, it's crucial to have a solid change management strategy to bring stakeholders and users on board.



CONCLUSION

# Choosing the Right Path for Your Business

Selecting the right migration path depends on your organization's specific needs, including:

- **Business Goals and Timelines:** Are you aiming for a quick transition, or is your focus on optimizing and modernizing processes?
- **IT Resources and Infrastructure:** Do you have existing infrastructure investments you want to leverage, or is the cloud the way forward?
- **Scalability and Flexibility Needs:** How critical is flexibility and scalability to your business's future growth?
- **Budget Considerations:** What are the financial implications of each option in terms of both upfront and ongoing costs?

To help you choose, conducting an SAP readiness assessment is key. This helps evaluate your current systems, resources, and goals, ensuring you take the optimal path to SAP S/4HANA.

Migrating to SAP S/4HANA is a major step towards business transformation. Whether you decide to keep your infrastructure on-premises, leverage the cloud for greater scalability, or reimagine your processes with a clean slate, each migration path has its unique benefits. By understanding the options available and evaluating your specific business needs, you can ensure a smooth migration and set your organization up for continued success.

If you're ready to explore your migration options, connect with our experts at Resolve Tech Solutions. We're here to guide you through every step of your SAP S/4HANA journey.